

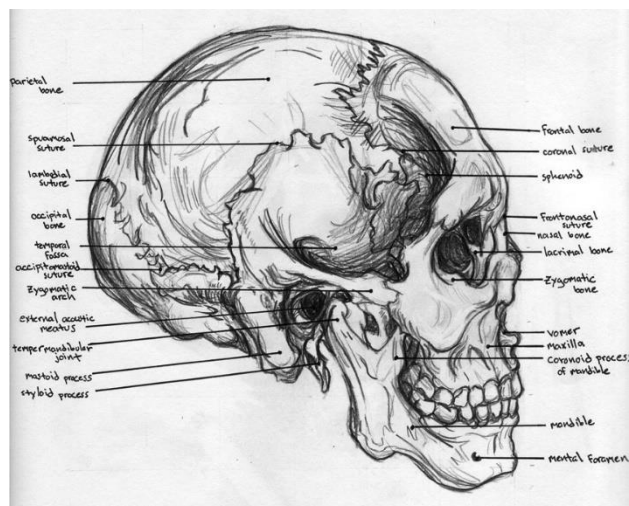
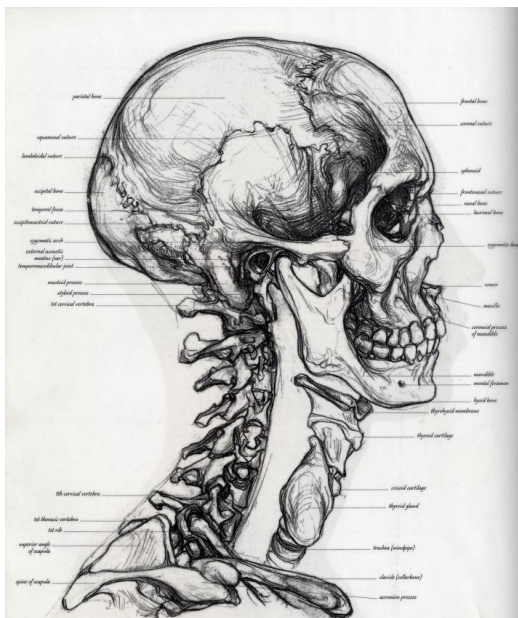
Heads – Summer transition work

Artist Sarah Simblet

Look carefully at Artist Sarah Simblet's head and anatomy studies. Complete your own accurate reproductions using **black biro** onto paper (newspaper/cartridge/ colour-washed/ sugar paper etc. – just try to avoid white and plain paper.

Experiment with a range of sizes but no larger than A4

The work will be added to your first few pages of your Y12 sketchbook



Jean Michel Basquiat

Collect information on the artist.

1. Background – what was his relationship with Artist Andy Warhol? How did this begin and how did it develop?
2. What type of work was Basquiat doing before he met Andy Warhol and how did this change over time?
3. Make small loose studies in mixed-media and media of your choosing that explore 'heads/skulls' by Basquiat